

How to find a network provider



Provider search made easy

When you're looking for a health care provider, there's a lot to consider. Is the provider in my network? Is the location close to home or work? Our online provider search tool can help you.

Get started

- Go to [Medica.com/FindADoctor](https://www.Medica.com/FindADoctor).
- Select your plan.
- See the **Providers and facilities** section and click on **See your choices**.

NOTE: You receive the highest level of benefits when you see providers in your plan's network.

Search for providers and facilities

You can search in several ways.

- 1 Enter a ZIP code to narrow your search when you use options 2 or 3 listed below.
- 2 Type any of the following into the search box, then click **GO**:
 - Provider name
 - Facility name (clinic, hospital, urgent care center, etc.)
 - Provider specialty (cardiology, allergy, dermatology, etc.)
 - Condition (asthma, diabetes, heart disease, etc.)
- 3 Choose from a list of Common Specialties, or Facilities and Services, or Conditions.
- 4 Search for your best provider match by clicking on **Start the search for your best match provider**.

Care Options
See the doctors, specialists, facilities, and other programs and services covered by this plan.

- Providers and facilities**
Find the right caregiver for you. It's easy to pick from top-notch providers and facilities in your area.
[See your choices](#)
- Virtual care**
Reliable care from the comfort of your home. Get 24/7 treatment online or over the phone. Check with your clinic about getting virtual care for common conditions.
Virtuwell - Find a virtual provider [↗](#)
Amwell - Find a virtual provider [↗](#)
- Behavioral health**
Get help for mental health concerns that may be keeping you from your best life.
[Start here](#) [↗](#)
- Pharmacy locator**
Keep yourself in the best possible health with access to medications from a wide range of pharmacies. See your pharmacy benefits.
[Find a pharmacy](#) [↗](#)
[Pharmacy benefits](#) [↘](#)

Note: Image may look different depending on your plan.

MEDICA. English | Español [Help](#)

Search for a Doctor or Care Provider

Quickly find the right doctor or health care facility. Start by simply clicking the icon that matches your interest or narrow your results right away by providing health plan, zip code, and distance from you.

1 Your Network [dropdown] ZIP Code [input] Enter Miles [input]

2 Name, Facility, Specialty, or Condition [input] GO >

3 [Common Specialties](#) [Facilities and Services](#) [Conditions](#)

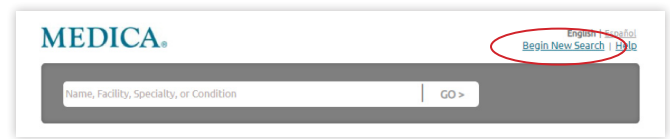
4 **Start the search for your best match provider**

Search for your best match provider
Find a provider who treats other people with your conditions, age, and gender

You will be asked to provide your health conditions, age range, and gender. Information you provide is not saved in our system.

Search tips

- Once you start typing in the search box, you'll see a drop-down menu with options. If you see the option you want, click on it. Otherwise, continue typing and click **GO**.
- Don't use special characters, like "&" or "*".
- If you don't find the provider you're looking for, try searching another way. For example, if there's a chance you've misspelled the name, try searching by the provider's specialty. Or search for the provider name if you're not finding the clinic name, or search for the clinic name if you can't find the provider name.
- If you need to clear your search criteria and start over, click the **Begin New Search** link in the right corner above the search bar.



Review your results

You can narrow and sort your results, or create a PDF directory using the following tips.

1 Narrow your results

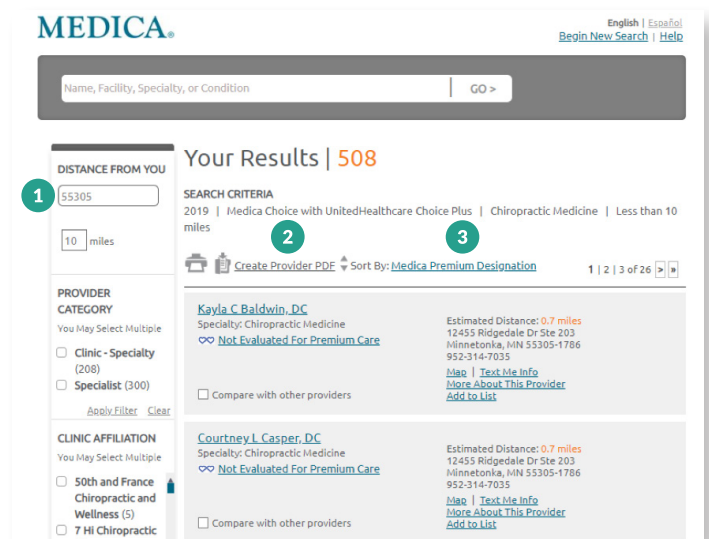
Use the options on the left to narrow your results.* You can narrow by ZIP code (you can also enter the number of miles from your ZIP code to include in your search), provider category, specialty, clinic or hospital affiliation, and other criteria. For some selections, you'll need to click **Apply Filter** to update your results.

2 Create a PDF of your results

Click **Create Provider PDF** to make a PDF of your results. After you create the provider PDF, you can download it (if you have fewer than 1,000 results) or email it to yourself (or someone else).

3 Sort your results

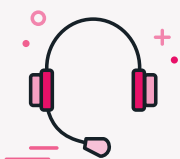
The closest providers will be listed first. Otherwise, your results will be sorted alphabetically. To change how your results are sorted, click the link to the right of **Sort By**.



Medica Elect®/Medica EssentialSM Members Only

You enroll in a primary care clinic that's affiliated with a care system. To receive your highest level of benefits, get all of your care from providers in your care system. Use the **Care System** filter to see providers in your care system.

*Your search results may include providers in Medica's nationwide Travel Program Network. Narrowing your results can help you find what you're looking for more quickly.



Questions? We're here.

Call Customer Service at the number on the back of your Medica ID card. **(TTY: 711)**